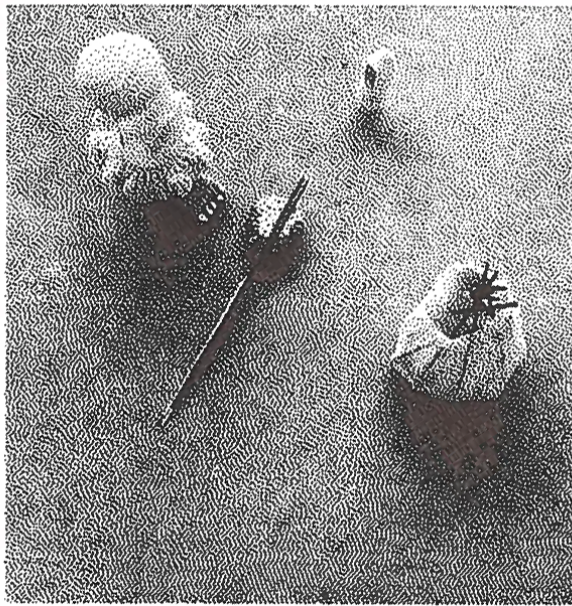


# CONVERSATION



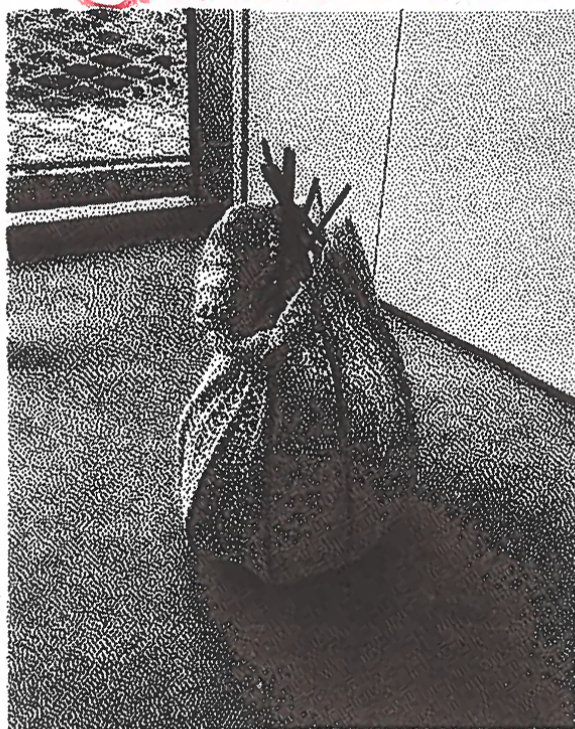
WAITE R



EATER



CANNIBALIZED



# CANNIBAL'S CHECK

Date	Table 3	Guests 1 READER	Server JANA KEUDENER	082205
------	------------	--------------------	----------------------------	--------

APPT-SOUP/SAL-ENTREE-VEG/POT-DESSERT-BEV

DID YOU ENJOY YOUR DINNER?		
DID IT TASTE GOOD? <u>DO YOU?</u>	x2	
HOW FAST DID YOU EAT?		
DID YOU TEAR IT WITH YOUR TEETH? OR SLICE IT UP?	x2	
WHAT ARE YOU?? ARE WE AKIN??		
DO YOU COME FROM STARS?	x7	
DO YOUR ATOMS VIBRATE THE WAY MINE DO?		
HOW DO YOU CARRY YOUR NUTRIENTS?		
WHAT IS YOUR NUTRITION?		
DO YOU THINK ABOUT ALL YOUR NEGATIVE SPACES?		
LIKE THE SPACES BETWEEN WHAT IS?		
<del>DOES</del> DOES STARLIGHT SHINE ON YOU?		
WHO ARE THE TREES?		
WHO DID YOU FIRST CRY TO? BEG TO?		
DID YOU ENJOY YOUR DINNER?		
DO CANNIBALS ENJOY THE IR DINNER?		
YOU ARE A CANNIBAL		
	Tax	MAKE YOURSELF INTO ME
	Total	PLEASE CONSUME
Thank You — Please Come Again		ME